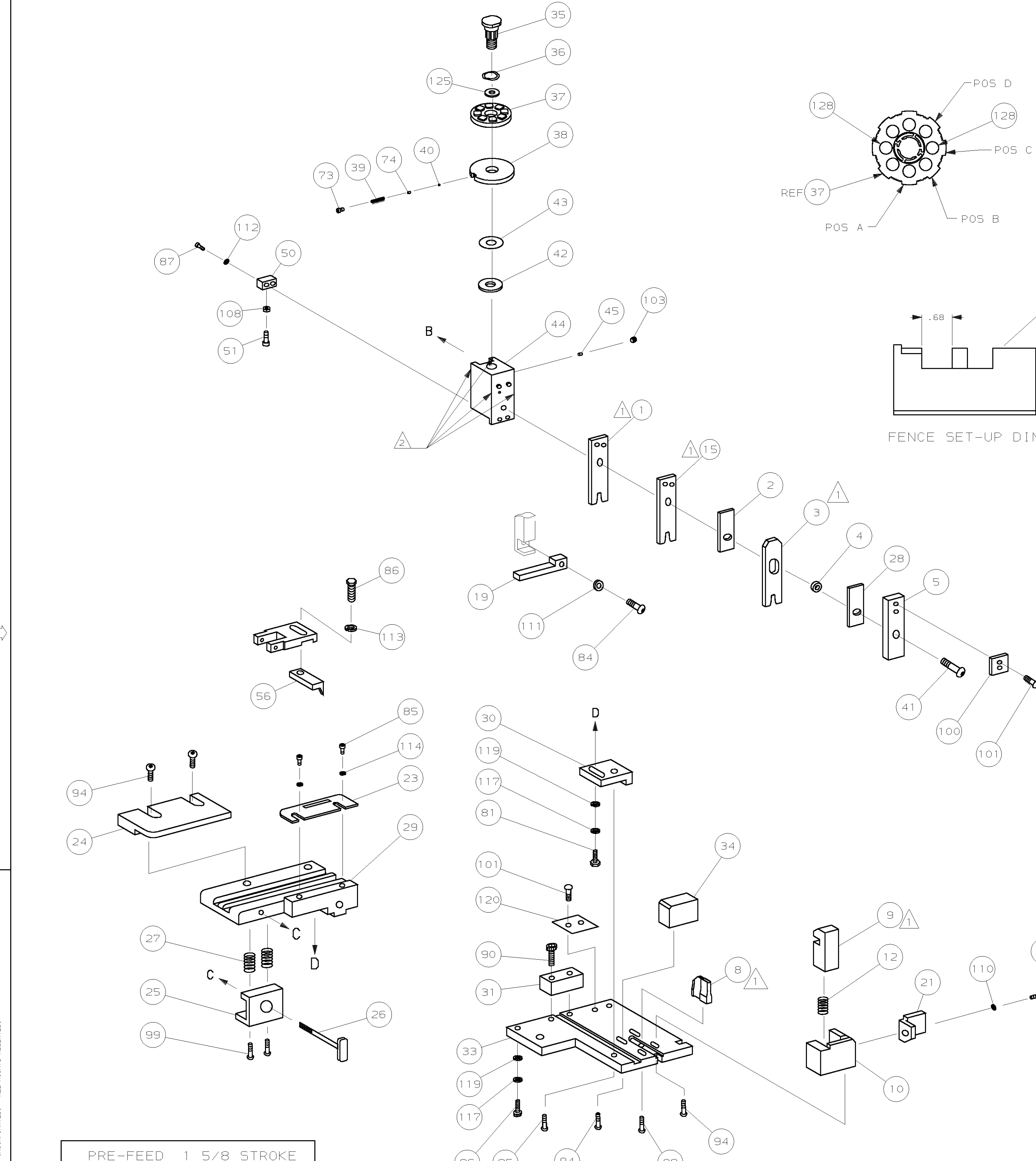


PART NUMBER	REV	FIRST USED
567934-1	C	854040-3

TERMINAL NAME: RECEPTACLE		286558	VISIBLE	CRIMPING DATA	
AMP	MFG	PAD LTR	CRIMP HEIGHT		WIRE SIZE
286558-1	12034046	A	.067 ±.002 [1.70 ±0.05mm]		18
286558-2	12015823	B	.049 ±.002 [1.24 ±0.05mm]		20
		C	NOT		USED
		D	NOT		USED
CRIMP	SIZE	TYPE	RANGE		
WIRE	.094 [2.39mm]	F	20-18		
INSUL	.135 [3.43mm]	F	∅ .095		
WIRE STRIP LENGTH	TERM APPL SPEC	FEED	APPL INSTRUCTION	SET UP GAGE	LAYOUT
-	NONE	.600	SEE CUSTOMER MANUAL	NONE	L1884

SIM TO HDM NONE					
REF	QTY	REV	PART NO	DESCRIPTION	ITEM NO
					70
					69
					68
					67
					66
					65
					64
					63
					62
					61
					60
					59
					58
					57
					56
					55
					54
					53
					52
					51
					50
					49
					48
					47
					46
					45
					44
					43
					42
					41
					40
					39
					38
					37
					36
					35
					34
					33
					32
					31
					30
					29
					28
					27
					26
					25
					24
					23
					22
					21
					20
					19
					18
					17
					16
					15
					14
					13
					12
					11
					10
					9
					8
					7
					6
					5
					4
					3
					2
					1

QTY	REV	TER	PART NO	DESCRIPTION	ITEM NO
2	-	C	4-354779-2	PIN, WIRE DISC (.3200)D	129
2	-	C	9-354778-1	PIN, WIRE DISC (.2950)C	128
					127
					126
1	-	A	986950-1	WASHER, FLAT PRECISION	125
1	-	A	217238-3	GENERAL INSTRUCTION PACKAGE	124
					123
					122
					121
1	-	B	690701-2	PLATE, SERIAL NO.	120
2	-	A	21899-2	WASHER, FLAT (#10) S G ADJ BLK	119
					118
2	-	A	21024-5	WASHER, LOCK (#10) ADJ BLOCK	117
					116
					115
2	-	A	21024-2	WASHER, LOCK (#4) FRONT STP GUIDE	114
REF	-	A	21024-4	WASHER, LOCK (#8) FEED FINGER	113
2	-	A	21024-4	WASHER, LOCK (#8) DEP-HOLD	112
REF	-	A	21024-4	WASHER, LOCK (#8) STRIPPER	111
1	-	A	21024-3	WASHER, LOCK (#6) SCRAP GUIDE	110
					109
1	-	A	21018-5	NUT, HEX (#6) HOLD DOWN	108
					107
					106
					105
					104
1	-	A	21009-2	SCR, SKT 5ET (1/4-20x.25 LW) RAM	103
					102
4	-	A	21017-2	SCR, DRIVE (#2x.19) ID PLATE	101
1	-	B	819347-1	PLATE, IDENTIFICATION	100
2	-	A	3-21002-0	SCR, BHC (10-32x.88) DRAG	99
1	-	A	22733-8	SCR, BHC (8-32x.38 LW) ANVIL	98
					97
1	-	A	3-21000-8	SCR, SHC (10-32x.88) MOUNTING	96
1	-	A	2-21002-7	SCR, BHC (10-32x.50) S G ADJ BLK	95
6	-	A	2-21002-2	SCR, BHC (8-32x.50) SHEAR-TERM SUP	94
					93
					92
1	-	A	1-21002-7	SCR, SHC (6-32x.50) CAM	91
2	-	A	2-21000-7	SCR, SHC (8-32x.50) SCR BLK	90
					89
					88
2	-	A	2-21000-8	SCR, SHC (8-32x.62) DEP-HOLD DOWN	87
REF	-	A	2-22603-0	SCR, HEX HD (8-32x.31) FEED FINGER	86
2	-	A	1-21000-3	SCR, SHC (4-40x.25) F ST GUIDE	85
REF	-	A	22733-9	SCR, BHC (8-32x.50 SL) STRIPPER	84
					83
					82
1	-	A	3-22603-1	SCR, HEX (10-32x.38) S G ADJ BL	81
					80
					79
					78
2	-	B	463310-4	BLADE, STRIPPING (#18)	77
					76
					75
1	-	A	690603-1	SPRING, ASSIST	74
1	-	A	23030-1	SCR, SKT CAP (6-32x.25) CP DSC	73
					72
					71



QTY	REV	TER	PART NO	DESCRIPTION	ITEM NO	
-1	U/M	DWG	SIZE	PART NO	DESCRIPTION	ITEM NO
QTY REOD PER ASSY						
PARTS LIST						

QTY	REV	TER	PART NO	DESCRIPTION	ITEM NO	
-1	U/M	DWG	SIZE	PART NO	DESCRIPTION	ITEM NO
QTY REOD PER ASSY						
PARTS LIST						
REVISION OF EACH ASSY NO (WHEN BLANK, USE DWG REVISION)						
DIMENSIONS IN INCHES. DO NOT SCALE PRINT. TOLERANCES UNLESS OTHERWISE SPECIFIED: 2 PLC DEC ±.02 3 PLC DEC ±. 4 PLC DEC ±- ANGLES ±- SURF TEXTURE: REMOVE BURRS, BREAK SHARP EDGES R.015 MAX						
MATERIAL: HT TR FIN			MATERIAL: HT TR FIN			
DR: 28FEB97 APP: 28FEB97 J.DODDS			AMP Incorporated Harrisburg, PA 17105-3608			
CHK: 28FEB97 C.ERISMAN			MACHINE REF STRIPPER CRIMPER			
NAME: STRIPPER CRIMPER APPLICATOR			SHEET 1 OF 1 REV C1			
SCALE: DWG NO: 567934			CUSTOMER AND ASSEMBLY DRAWING			
CASE CODE: 00779			RESTRICTED TO			

THIS DRAWING IS A CONTROLLED DOCUMENT.

RELEASED FOR PUBLICATION APR 20 1999
 BY AMP INCORPORATED. ALL RIGHTS RESERVED.
 THIS DRAWING IS UNCLASSIFIED
 COPYRIGHT 1999
 LOC A
 DIST 66
 AMP 1756 REV 3-92 16-FEB-04 12:45:02 us016926 7

567934